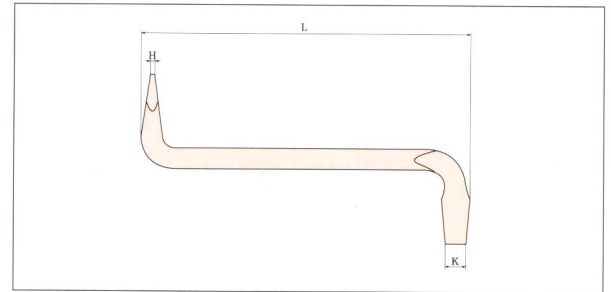


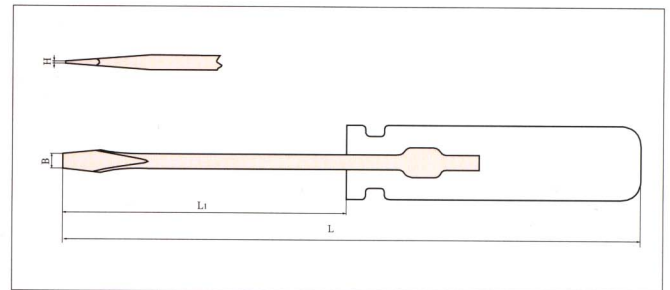
G

Screwdriver, Offset



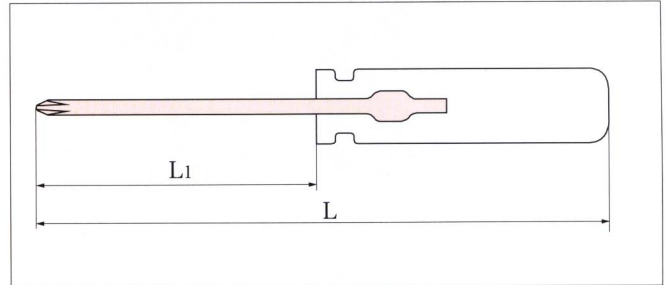
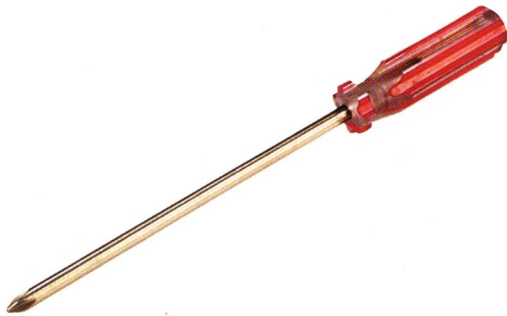
Number	L mm	H mm	K mm	Be-Cu g	Al-Cu g
259-1002	72	1	6	25	23
259-1004	125	1.5	8	55	50
259-1006	196	1.5	10	135	124

Screwdriver (Standard Type)



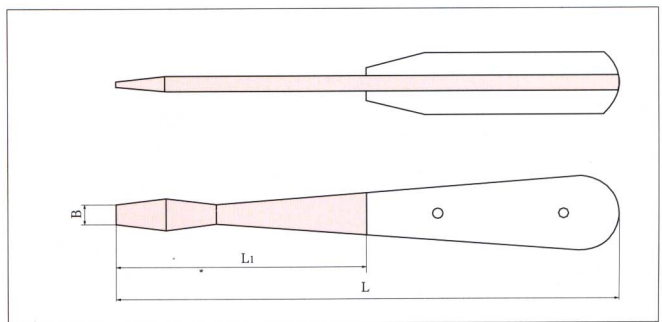
Number	L ₁ inch	L ₁ mm	L mm	H mm	B mm	Be-Cu g	Al-Cu g
260-1002	2	50	108	0.4	3	33	30
260-1004	2	50	110	0.5	4.5	33	30
260-1006	3	75	133	0.4	3	39	35
260-1008	3	75	153	0.5	4	44	40
260-1010	3	75	153	0.6	5	44	40
260-1012	4	100	184	0.5	4	55	50
260-1014	4	100	184	0.6	5	60	55
260-1016	4	100	184	0.8	6	66	60
260-1018	5	125	218	0.8	6	82	75
260-1020	6	150	243	0.8	6	85	78
260-1022	6	150	243	1	7	99	90
260-1024	6	150	255	1.2	8	110	100
260-1026	8	200	305	1.2	8	175	160
260-1028	10	250	355	1.4	9	197	180
260-1030	10	250	370	2	11	208	190
260-1032	12	300	420	1.8	10	277	250
260-1034	12	300	420	2	11	285	260
260-1036	14	350	470	2	11	328	300
260-1038	16	400	550	2.4	12	470	430
260-1040	18	450	600	2.4	13	481	440

Screwdriver(Phillips Type)



Number	L ₁ inch	size	L ₁ mm	L mm	Be-Cu g	Al-Cu g
261-1002	2	0	50	108	33	30
261-1004	3	2	75	153	47	43
261-1006	4	2	100	184	66	60
261-1008	5	2	125	218	82	75
261-1010	6	2	150	243	88	80
261-1012	8	3	200	305	175	160
261-1014	10	3	250	355	197	180
261-1016	12	4	300	420	275	251
261-1018	14	4	350	470	306	280
261-1020	16	4	400	550	339	310
261-1022	18	4	450	601	361	330

Screwdriver



Number	L mm	L ₁ mm	B mm	Be-Cu g	Al-Cu g
262-1002	200	100	8	135	125
262-1004	250	110	8	220	204
262-1006	300	160	10	305	275
262-1008	500	350	11	505	461