

Melt pressure transmitter

Melt pressure transmitter design with flange mounting PT124B-116, PT124B-126

Description

PT124B-116, PT124B-126 are flanged stem versions, they are designed for use in hazardous locations. They adopt special construction design and excellent alloy elastic membrane to reduce the thermal draft and improve measurement accuracy. The zero & full span can be calibrated, with amplifying signal be connected with PLC and 80% calibration inside.



PT124B-116



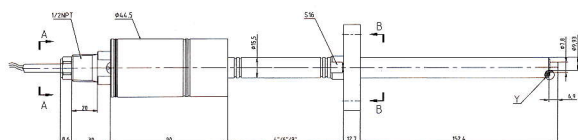
PT124B-126

Application

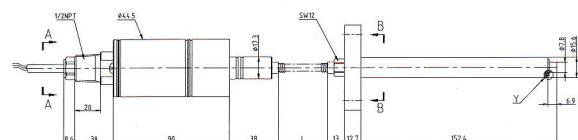
It has wide application of pressure measurement & control for melt-temp liquid for chemical and fiber equipment, polyester equipment and etc.

Dimensions

PT124B-116



PT124B-126



M	d1	d2	d3	d4	A	B	C	S	W	6"	9"	12"
1/2-20UNF	φ10.5	φ10.5	φ12.7									
M14×1.5	φ7.8	φ11.8	φ11.8	φ13.5	5.4	11.2	16	16	152	230	305	
M18×1.5	φ9.8	φ15		φ15.5			20	22				

Ordering Guide

Model	Range(bar)	Output	Screw Thread	Electric connection	Other requirement
PT124B-116 PT124B-126	---	---	---	---	---
Example: PT124B-126-500Bar-4/20mA-DN50					

Specifications

- **Pressure range:** 0-1MPa...0-150MPa
(0-150psi...0-3000psi)
- **Over Pressure:** 1.5 X FSO
- **Combined Error:** ± 0.5% FSO
(Including Linearity, Repeatability & Hysteresis)
- **Output:** 3.33 mV/V, 2mV/V; 4-20mA, 0-10V, 0-5V
- **Input Voltage:** 10VDC, 24VDC
- **Repeatability:** ± 0.2% FSO
- **Bridge Resistance:** Input: 345 Ohms minimum
Output: 350 Ohms ± 10%
- **Internal Shunt Calibration (R-Cal):** 80% FSO ± 1%
- **Insulation Resistance:** 200 megohms @ 100 Vdc
- **Max Diaphragm Temperature:** 400°C
- **Mounting Torque:** 500 inch/lbs. maximum
- **Standard Wetted Parts:** Diaphragm coated 15-5 PH SST
- **Process connector:** Flange mounting