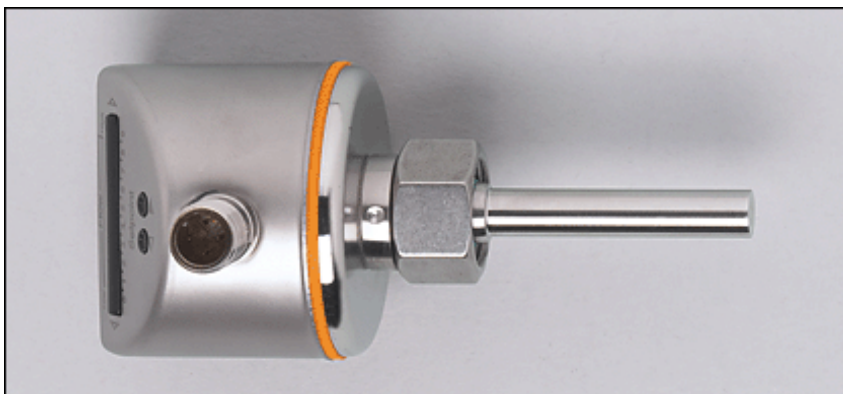


Flow sensors

SI5002

SID10ADBFPKG/US
 Flow monitor
 Compact type for adapter
 Connector
 Process connection: internal thread
 M18 x 1.5 for adapter
 2 switching outputs



Made in Germany

Application
Electrical design
Output
Operating voltage [V]
Current rating [mA]
Short-circuit protection
Reverse polarity protection
Overload protection
Voltage drop [V]
Current consumption [mA]
Max. temperature gradient of medium [K/min]
Pressure rating [bar]
Liquids
Medium temperature [°C]
Setting range [cm/s]
Greatest sensitivity [cm/s]
Gases
Medium temperature [°C]
Setting range [cm/s]
Greatest sensitivity [cm/s]

liquids and gases	
DC PNP	
2 x normally open / closed programmable	
Operating voltage [V]	19...36 DC
Current rating [mA]	2 x 250
Short-circuit protection	pulsed
Reverse polarity protection	yes
Overload protection	yes
Voltage drop [V]	< 2.5
Current consumption [mA]	< 60
Max. temperature gradient of medium [K/min]	300
Pressure rating [bar]	300
Liquids	
Medium temperature [°C]	-25...80
Setting range [cm/s]	3...300
Greatest sensitivity [cm/s]	3...100
Gases	
Medium temperature [°C]	-25...80
Setting range [cm/s]	200...3000
Greatest sensitivity [cm/s]	200...800

SI5002

Adjustment of the switch point	pushbuttons
Switch point accuracy [cm/s]	± 2...± 10 *)
Hysteresis [cm/s]	2...5 *)
Repeatability [cm/s]	1...5 *)
Power-on delay time [s]	10
Response time [s]	1...10
Temperature drift [cm/s x 1/K]	0.1 **)
Ambient temperature [°C]	-25...80
Storage temperature [°C]	-25...100
Protection	IP 67, III
Shock resistance	DIN IEC 68-2-27:50 g (11 ms)
Vibration resistance	DIN EN 60068-2-6:20 g (55...2000 Hz)
EMC	EN 61000-4-2 ESD: 4 kV CD / 8 kV AD EN 61000-4-3 HF radiated: 10 V/m EN 61000-4-4 Burst: 2 kV EN 61000-4-6 HF conducted: 10 V
MTTF [Years]	277
Housing materials	stainless steel 316L / 1.4404; stainless steel 304 / 1.4301; PC (Makrolon); PBT-GF 20; EPDM/X (Santoprene)
Materials (wetted parts)	stainless steel 316L / 1.4404; O-ring: FPM 8 x 1.5 gr 80° Shore A
Function display LED	10 LEDs, three-colour
Connection	M12 connector
Weight [kg]	0.235
Remarks	*) for water; 5...100 cm/s; 25°C (factory setting) **) for water; 5...100 cm/s; 10...70°C

Wiring

